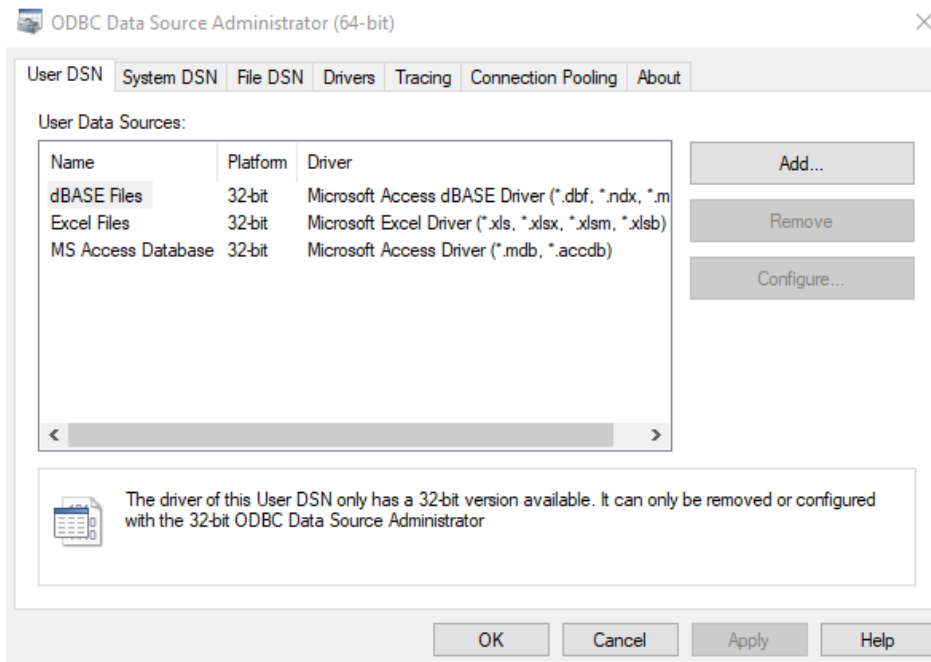
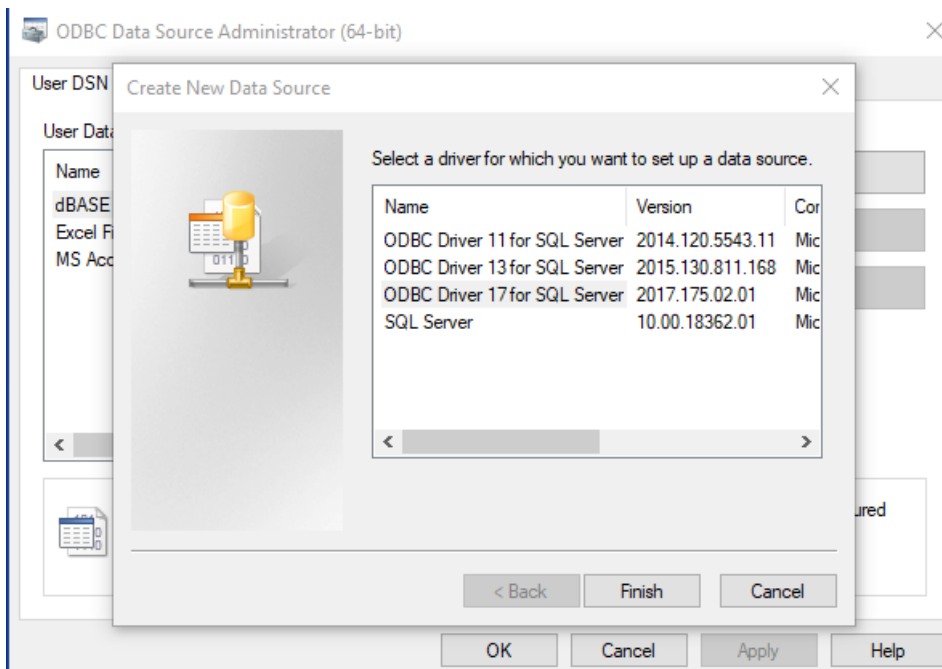


Instructions for testing the RPM SQL ODBC Connection

Open the ODBC Data Source Administrator in Control Panel.



Click Add to create a new DSN. Select the ODBC driver that you will be using on all of your client computers.



Enter a Name for the DSN and select your SQL Server or enter the server name manually.

Create a New Data Source to SQL Server

This wizard will help you create an ODBC data source that you can use to connect to SQL Server.

What name do you want to use to refer to the data source?

Name: Test RPM

How do you want to describe the data source?

Description:

Which SQL Server do you want to connect to?

Server: SQLSERVERNAME

Finish Next > Cancel Help

Select the “With SQL Server authentication” option and enter the user id and password for the RPMDB SQL database.

Create a New Data Source to SQL Server

How should SQL Server verify the authenticity of the login ID?

With Integrated Windows authentication.

SPN (Optional):

With Azure Active Directory Integrated authentication.

With SQL Server authentication using a login ID and password entered by the user.

With Azure Active Directory Password authentication using a login ID and password entered by the user.

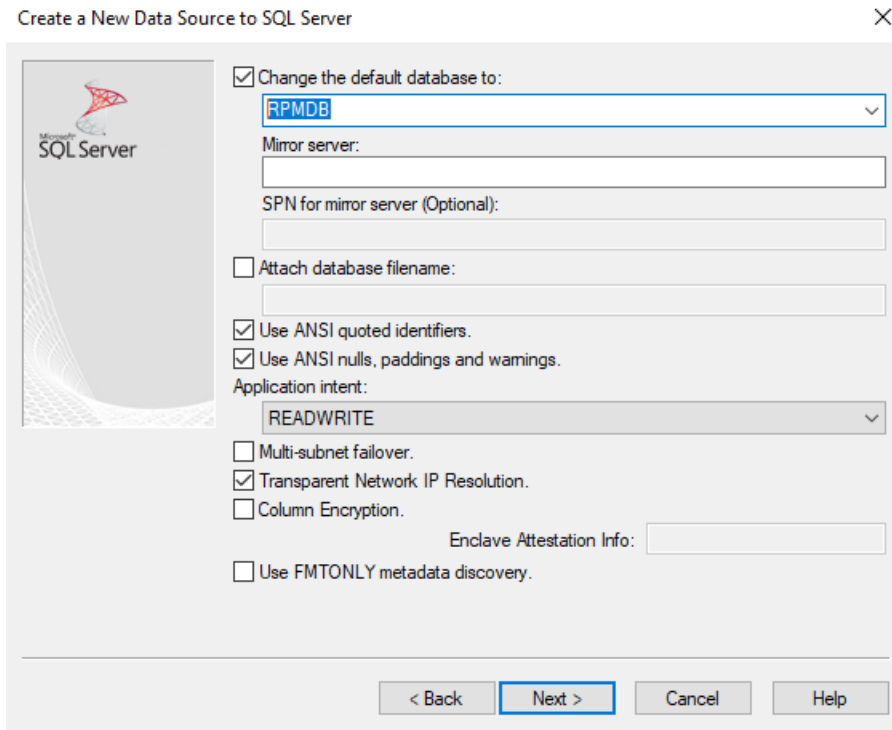
With Azure Active Directory Interactive authentication using a login ID entered by the user.

Login ID: rpmuser

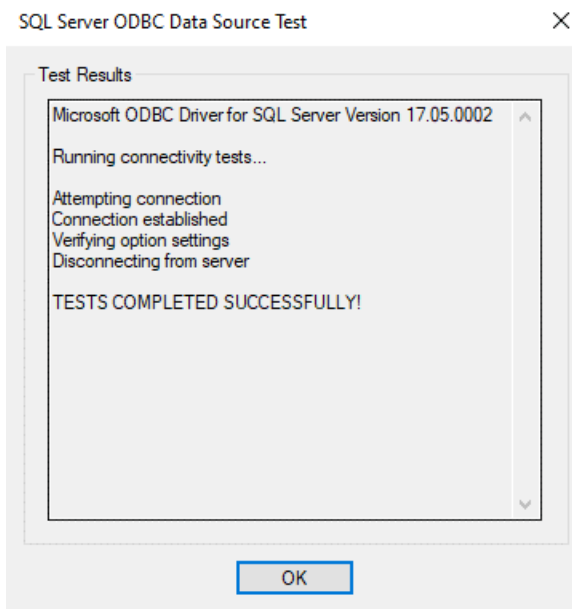
Password: ●●●●●●●

< Back Next > Cancel Help

Change the default database to RPMDB.



Click Next until you get the Finish button and then select Test Data Source. If the test is successful, you can proceed with setting up the RPM SQL Connection.



You can remove the Test RPM DSN when you are done as it will not be needed to run RPM.